



## freedom FOR A LIFETIME

Cerebral palsy (or CP) is one of the most common childhood disabilities in the United States. It can impact a child's ability to move, speak, learn and become independent.

Here are some important things you should know about CP.

### INCIDENCE OF CP



The incidence of cerebral palsy has been steady over the last 10 years, impacting 2-3 out of every 1,000 children born in the U.S.

(Source: Centers for Disease Control and Prevention)

### MAJOR CAUSES OF CP



Premature birth  
(less than 37 weeks)



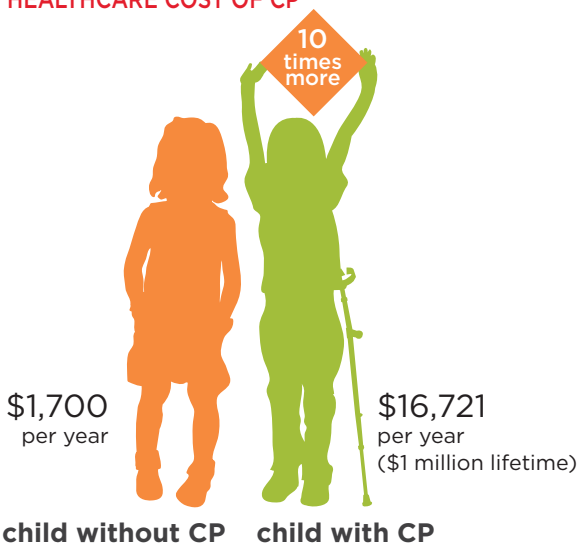
Low birth weight  
(less than 3.3 lbs.)



Infant stroke and delayed treatment

Improvements to medical care and technology have reduced infant mortality but increased incidence of CP.

## HEALTHCARE COST OF CP



## THERE'S HOPE AHEAD

New research has provided excellent ways to diagnose CP in infants 1-2 months of age. That's crucial, because early detection and appropriate therapy can help a child develop more fully and with fewer complications. This leads to greater independence and lower lifetime cost.

Mary Free Bed will be on the leading edge of CP diagnosis and treatment. We plan to develop a cerebral palsy Center of Excellence using these new techniques. The impact will be life-changing for patients and their families.

Restoring Hope and *Freedom*  
**Mary Free Bed**  
Rehabilitation Hospital Foundation

235 Wealthy St. SE | Grand Rapids, MI 49503  
[www.MaryFreeBed.com/Foundation](http://www.MaryFreeBed.com/Foundation) | 616.840.8137